



WASHINGTON DC CAPITOL HILL



ABOUT YOTEL

Opening in 2020 central to Union Station and the U.S. Capitol building, YOTEL Washington DC Capitol Hill will be a hub for business networking and a go-to venue for events. With self-service check-in kiosks to save you time and ergonomically designed “cabins” (YOTEL speak for rooms) to maximize available space, YOTEL breaks hotel conventions. Central locations, affordable prices, super-fast Wi-Fi and relaxed public area where you can meet, work, relax and recharge, YOTEL offers everything you need and nothing you don’t!

MEETINGS & EVENTS

Between its formal ballroom and technologically advanced, flexible, and contemporary meeting rooms, with over 15,000 sq. ft. of meeting & event space, groups of all sizes are accommodated perfectly. Elevate your stay with our seasonal rooftop bar for lounging or private events.

Art and Soul

At our Capitol Hill hotel, Art and Soul exudes true warmth and hospitality. Playful regional elements such as hand-painted farm signs and traditional folk art are also used throughout the space in honor of the D.C. restaurant’s regional influences. In warmer weather, an expansive front patio provides an al fresco dining option with a fire-pit and grill.

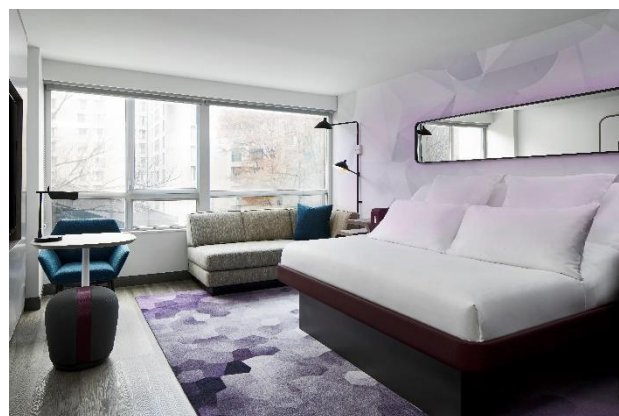
Whether it be inside at a table or outside at the rooftop bar, on our patio or in one of our private dining rooms you’re sure to find the perfect setting for all occasions in Washington D.C.

CABINS

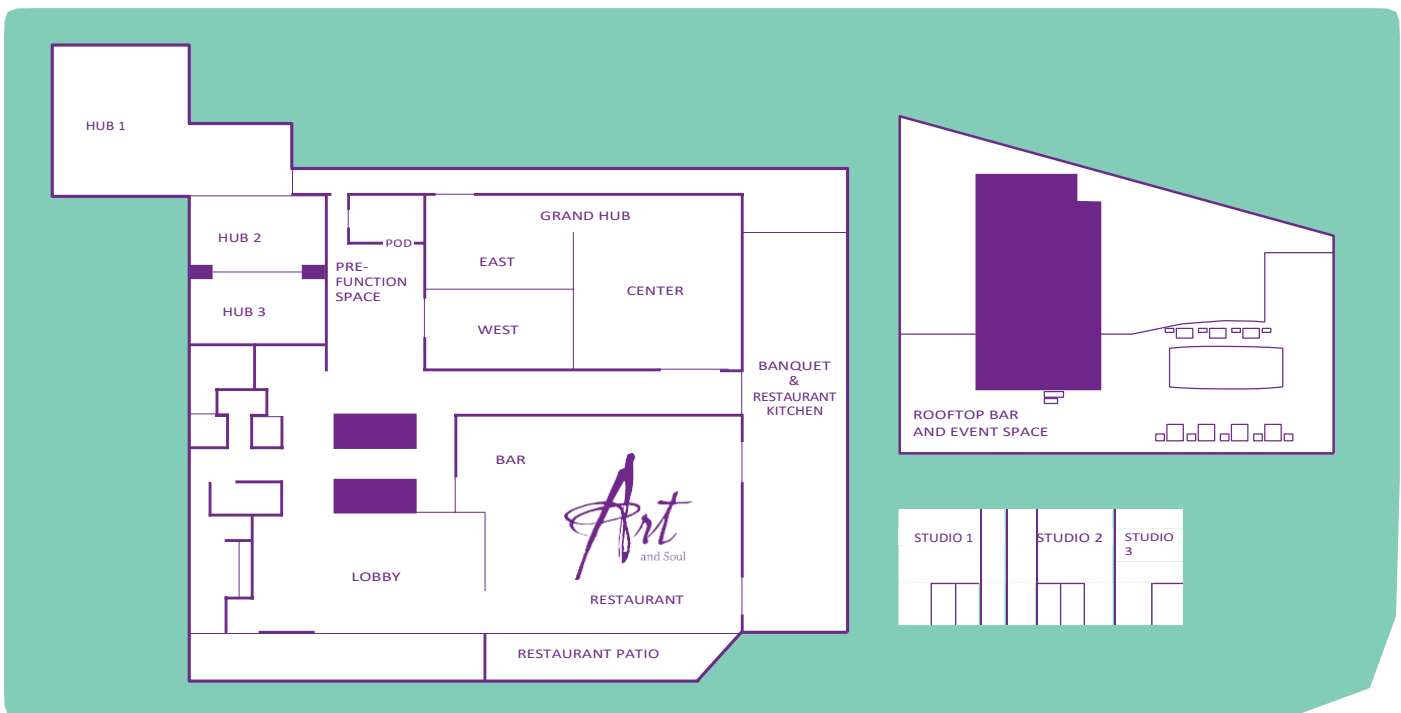
Smartly designed to maximize available space, our cabins feature the award-winning signature YOTEL SmartBed™, which glides from a sofa to a fully flat bed at the touch of a button. Every detail of all our cabins has been carefully considered, from the desk and work lamp to the adjustable mood lighting and refreshing rain shower. Super-fast Wi-Fi is available in the cabins and throughout the hotel, including our meeting rooms.

Cabin Types	Number of Cabins	Number of Guests
Premium King	136	2
First Class King	127	2
First Class Queen/Queen	114	4

PREMIUM KING



NAME OF ROOM	DIMENSIONS	SQ. FT.	CEILING HEIGHT	THEATRE	CLASS-ROOM	ROUNDS (OF 10)	HOLLOW SQUARE	U-SHAPE	CONF	RECEPTION
Grand Hub	80 x 55'	4,400	12'	500	300	380	100	75	100	500
Grand Hub West	38 x 26'	988	12'	115	60	80	35	30	35	100
Grand Hub East	38 x 26'	988	12'	115	60	80	35	30	35	100
Grand Hub Center	55 x 40'	2,200	12'	250	150	200	60	40	60	250
Hub 1	36 x 29' & 25 x 17'	1,550	10'	150	90	130	36	32	40	150
Hub 3	36 x 22'	521	10'	50	30	40	25	22	24	50
Hub 2	33 x 18'	623	10'	50	30	40	25	22	24	50
Private Dining Room	37 x 17'	720	8'	40	—	—	—	—	50	80
Rooftop	51 x 109'	7,000	—	—	—	—	—	—	40	250
Patio	41 x 33'	1,394	—	—	—	—	—	—	—	75
Studio 3	18 x 13'	235	8'	—	—	—	—	—	10	—
Studio 1	25 x 18'	440	8'	25	18	30	18	16	18	40
Studio 2	25 x 18'	440	8'	25	18	30	18	16	18	40
POD	15 x 10'	200	10'	—	—	—	—	—	4	—



AT AGLANCE

Cabins	377
KOMYUNITI social space	Where people come together
Grand Hub Ballroom	4,400 square feet for more formal events, divisible into three sections
Hub 1	A 1,550 square foot, versatile space
Hub 2 / Hub 3	Two customizable meeting spaces, each 600 square feet (can be combined with Hub 1)
Studio 1 – 2 – 3	State-of-the-art executive boardrooms with natural light, flat-screen TVs and private powder rooms
Rooftop Bar	Space for up to 250 guests
Art & Soul Restaurant	Our kitchen serves simple, honest food that reflects a devotion to quality and responsibility
POD	Office space for Meeting Planners

